

4-Stage Telescopic Crane

TX160

A P P L I C A T I O N & A T T A C H M E N T

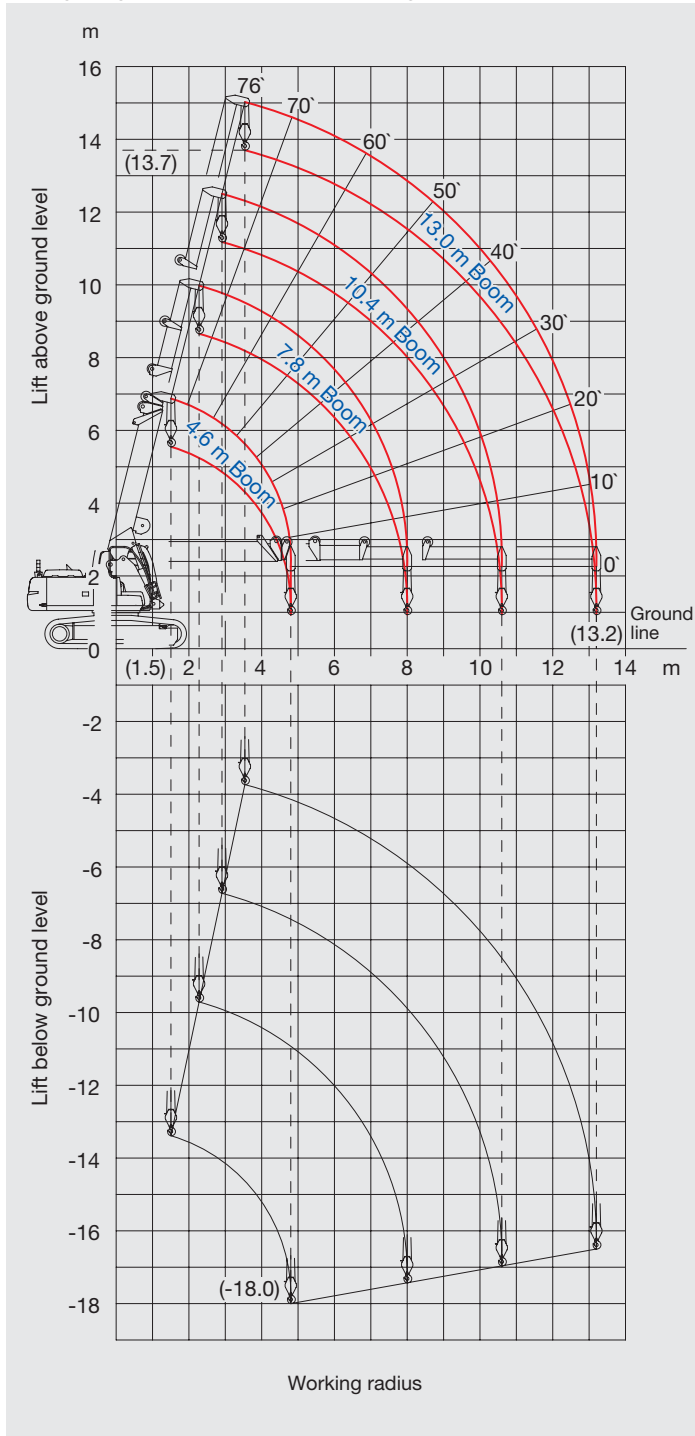
Max. Lifting Capacity : 8.0 t x 2.5 m
Max. Working radius : 0.9 t x 13.2 m



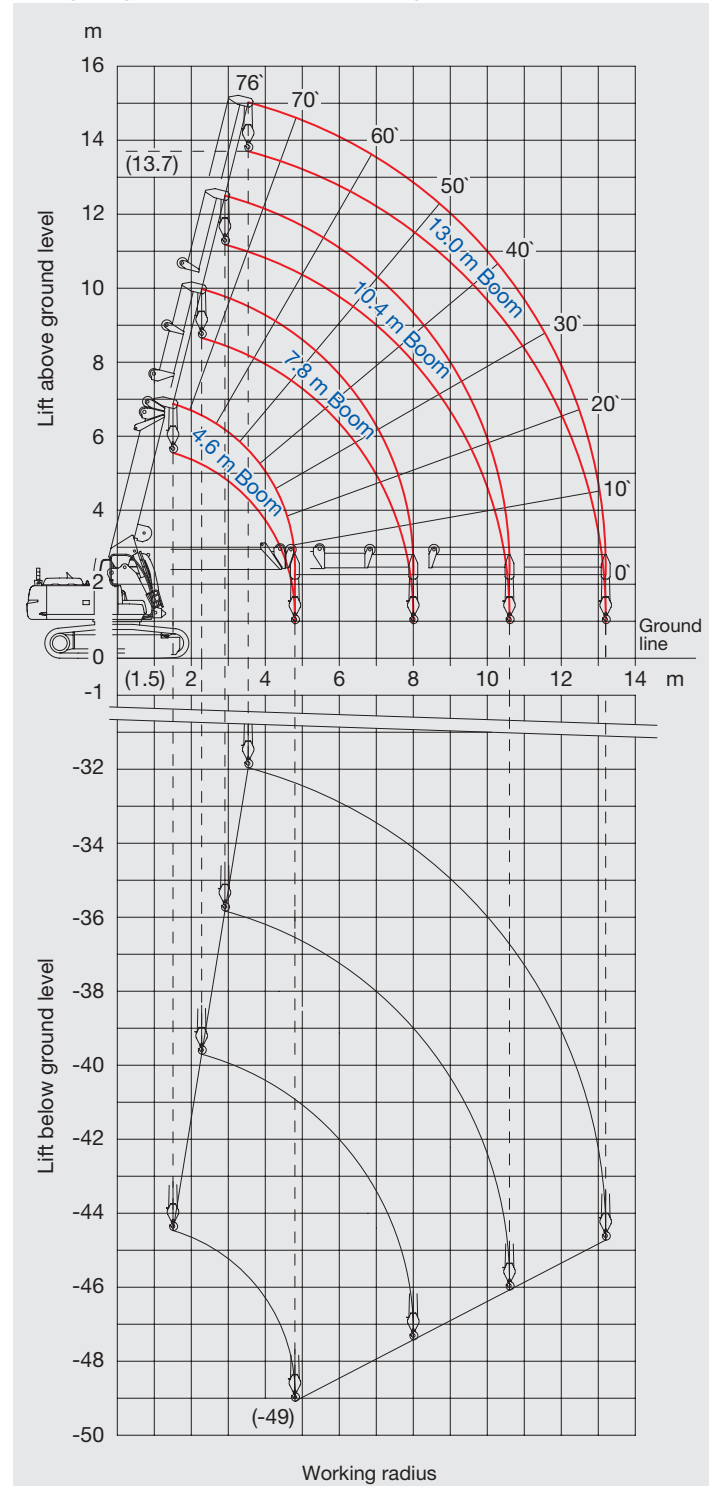
SPECIFICATIONS

WORKING RANGES

Lifting Height Below Ground : 5 reeving



Lifting Height Below Ground : 2 reeving



- Notes:
1. This graph shows working ranges with the load, and does not include boom deflection.
 2. The crane can be operated with the load in the range of 0 degree to 76 degree.

These specifications are subject to change without notice.

Illustrations and photos show the standard models, and may or may not include optional equipment, accessories, and all standard equipment with some differences in colour and features. Before use, read and understand the Operator's Manual for proper operation.